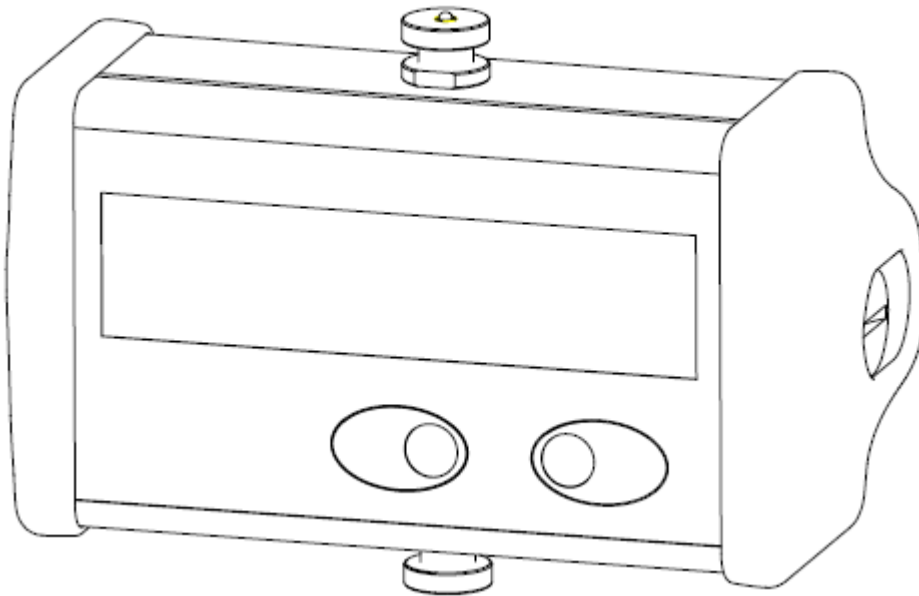


# MANUAL

Crane Scale  
(NAWI)

**SLS...**



<b>Content Page</b>	
<b>Safety instructions</b>	<b>5</b>
<b>1 Introduction and appropriate use</b>	<b>7</b>
<b>2 Information on verified scales</b>	<b>9</b>
2.1 Initial verification	9
2.2 Using verified scales in legal-for-trade operation	9
2.3 Declarations of conformity	10
<b>3 Operating the crane scale</b>	<b>11</b>
3.1 Display and control functions	11
3.2 Initial activation	12
3.3 Activation	13
3.4 Deactivation	13
3.5 Gross / net selection and taring	13
3.6 Zeroing	14
3.7 Changing the unit (kg <-> Lb)	14
3.8 Automatic zero tracking	14
3.9 Monitoring functions	15
3.10 Display values (factory defaults)	15
<b>4 Setup dialog</b>	<b>16</b>
4.1 Basic scale settings	16
4.2 Scale adjustment (Calibration in a partial load range)	17
<b>5 Standard dialog / extended standard dialog</b>	<b>19</b>
5.1 Counting scale	20
5.2 Power Off + Amplifier Filter	21
5.3 Mean-value calculation (Internal Conversion rate)	22
5.4 Automatic filter selection (Fast SettLing)	22
5.5 Gravitational acceleration at the place of installation (Gravity at destination)	24
5.6 Zero on startup (Zero Setting)	25
<b>6 Replacing the battery</b>	<b>25</b>
<b>7 Attaching load application parts</b>	<b>25</b>
<b>8 Error messages</b>	<b>26</b>
<b>9 Specifications</b>	<b>27</b>
<b>10 Dimensions</b>	<b>28</b>
<b>11 Gravitational acceleration factors</b>	<b>29</b>

This is a “Table of Contents preview” for quality assurance

The full manual can be purchased from our store:

[https://the-checkout-tech.com/manuals/hbm/SLS user manual.html](https://the-checkout-tech.com/manuals/hbm/SLS%20user%20manual.html)

And our free Online Keysheet maker:

<https://the-checkout-tech.com/Cash-Register-Keysheet-Creator/>

[HTTPS://THE-CHECKOUT-TECH.COM](https://THE-CHECKOUT-TECH.COM)